



# K Z N

## CRANE FOUNDATION

### Newsletter 7/2025

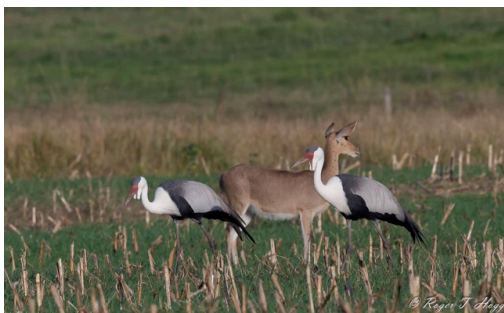
#### **Bill Barnes Crane and Oribi Reserve**

The Bill Barnes Crane and Oribi Nature Reserve, nestled in the KwaZulu-Natal Midlands, is a unique conservation area that embodies the KZN Crane Foundation's vision of managing a biodiverse and sustainable landscape. This reserve plays a crucial role in protecting endangered species including (but not exclusively) cranes and the endangered oribi antelope, while promoting the harmonious coexistence of agriculture and wildlife. Rich in natural grasslands, the reserve offers scenic trails that invite exploration and appreciation of its diverse ecosystems. Education is central to the reserve's mission, fostering awareness and involvement through community outreach and environmental learning. By integrating responsible farming practices with wildlife conservation, the reserve serves as a model for preserving biodiversity while supporting local livelihoods.



## Game Count

Game counts are conducted every year in the winter. This involves participants driving around at night on a specific date (weather permitting) in predefined areas, with spotlights and recording the species and numbers of game seen. The area covered incorporates the neighbouring farmers and the Bill Barnes Crane and Oribi Nature Reserve. We expect to hold the 2025 count towards the end of August.



# Fire

Fire can be regarded both as friend or foe when it comes to managing our natural veld or grasslands. No doubt that fire can cause long lasting negative effects when used incorrectly or for the wrong reasons. For example burning too early or too late, burning during hot, dry and windy conditions or simply burning when there's not enough material to burn.

At BBCONR we endeavor to manage our veld in such a way that it remains sustainably productive, and that it remains in a good or improving condition. Firebreaks have their obvious benefits but block burning is less well understood. Our block burns are effected after two consecutive grazing years and a years rest. As expected there's a great build up of dry matter after a year long rest and this needs to be removed before grazing the following year. We use fire before the onset of spring and on cool, humid day we'll burn with the wind in order to effect the "cool" burn we hope for. Our aims with this fire are to remove rank moribund material- which would otherwise be near useless to livestock the following spring. This will also release various plant nutrients in the form of ash back into the soil. Also to control, to a certain extent, alien vegetative encroachment. This use of grazing, rest and fire, has a real positive effect on our grasslands, especially with regards to basal cover, which in turn helps prevent erosion.

Many of our grassland species require the occasional fire to stay healthy and persistent, and even to activate some of the seeds, similar to the Fynbos region. With regards to using fire in the fight against parasites (ticks and worms) we believe the earlier fire , for example in late July vs the late fire in September is the most effective. Late September fires, in our experience, have little to no effect on parasite levels. By: John Pitout (KZNCF Committee Member)



# Erosion

Protecting the Bill Barnes Crane and Oribi Nature Reserve from soil erosion is vital to maintaining the health and sustainability of its ecosystems. Soil erosion not only degrades the fertile grasslands that support native plant and animal life, but also disrupts water quality in nearby streams and wetlands—critical habitats for cranes and other wildlife. If topsoil is washed away, it reduces the land's ability to support vegetation, leading to further habitat loss and increased vulnerability to invasive species. Preventing erosion also safeguards the agricultural potential of the land, ensuring that farming can continue in harmony with conservation goals. By managing erosion effectively, we help preserve the ecological balance of the reserve and protect its long-term biodiversity and productivity.

During the months of July and August the KZNCF has conducted erosion control measures on one of our unused trail paths. This involved filling potato bags with soil, strategically inserting rocks and soil. We are grateful to Vrystaat Farming for your generous donation of the potato bags.



## The IUCN Red List of Threatened Species on the BBCONR

South Africa uses the internationally endorsed IUCN Red List Categories and Criteria which has global inventory that assesses the extinction risk of species. This scientific system is designed to measure species' risk of extinction. It uses specific criteria to classify species into categories, such as Critically Endangered, Endangered, Vulnerable, Near Threatened, Critically Rare (for plants). The purpose of this system is to highlight those species that are most urgently in need of conservation action.

The KZN Crane Foundation is in the process of developing a list of the species which are known to occur at the BBCOR and include. Currently the list includes:

### ■ Endangered Species

Wattled Crane (recently moved from Critically Endangered in South Africa to Endangered category)

Grey Crowned Crane (Endangered)

Oribi (Endangered in South Africa)

Secretary Bird (Endangered)

**Vulnerable**

Cape Vulture

Blue Crane

Southern Bald Ibis

Grass Owl

**Near Threatened**

Spotted Necked Otter

Cape Clawless Otter

African Striped Weasel (to be confirmed if it occurs on the BBCONF)

**Least Concern**

Serval, Striped polecat and Aartvark occur on the BBCONR

We are also requesting support from experts to identify specific species which might occur on the reserve, but have not yet been confirmed. An example is the Long-toed Tree Frog (Endangered).

# Hunting

In collaboration with Ezemvelo KZN Wildlife, the KZN Crane Foundation assisted with the development, printing and distribution of the hunting regulations for KZN.

**SPECIALY PROTECTED GAME**

Cheetah, Leopard, Lion, Elephant Lichtenstein Hartebeest, Tsessebe, Black and white Rhino, Giraffe, Roan, Klipspringer, Grysbok and Aardvark

- Hunter need a **Specially Protected Game Permit** that shall be issued in his name.
- Shall specify Time and Place
- A return shall be submitted within 14 days
- Fee payable

**OPEN GAME**

Blesbuck, Springbuck  
No Closed Season  
No Permit or License

- Have to comply with all hunting regulations
- Hunter needs a land owners **permission letter** in writing to hunt open game

**PROTECTED GAME**

Blue Duiker, Red duiker, Black Wildebeest, Blue Wildebeest, Zebra, Hippo, Sable, Waterbuck, Suni, Oribi, Grey Rhebuck, Warthog, Steen-buck, Mountain and Common Reedbuck, Buffalo, Eland, Nyala, Bushbuck female, Red Hartebeest, Kudu, Whitebacked Duck, African Shelduck, Black Duck, Fulvous Whistling Duck, Crested Guinea Fowl, Southern pochard, Pygmy goose, Mokka duck, Knob billed duck, Cape shovler and Blue-Billed Teal

- Landowner needs a **Protected Game Permit** to hunt Protected Game at any time / all year round
- Hunter needs a **Protected Game License** to hunt Protected Game at any time / all year round

**UNPROTECTED ANIMALS**

Bush pig, Rock Hyrax (Dassie), Chacma Baboon, Vervet Monkey, BB Jackal, Black and Pied Crow

- No Closed Season
- No Permit or License required
- Hunting Regulations do not apply
- The Hunter needs a landowner's **permission letter** in writing to hunt unprotected game

**ORDINARY GAME OPEN SEASON**

Grey Duiker, Impala, Bushbuck male, Helmeted Guineafowl, African Olive Pigeon, Egyptian and Spurwing Geese, Yellowbilled Duck, Rednecked, Natal, Swainsons, Crested and Coqui Spurfowl, Greywing, Redwing and Shelly's Francolin, White-faced Duck and Common Quail.

- Landowner needs **NO license or permit** to hunt Ordinary Game in the open season
- Hunter needs an **Ordinary Game License** AND the land owners **permission in writing** to hunt Ordinary Game in the open season

**ORDINARY GAME CLOSED SEASON**

- Landowner needs an **Ordinary Game Permit** to hunt Ordinary Game in the closed season
- Hunter needs a **Special Game License** to hunt Ordinary Game in the closed season

**SPECIES IN GREEN REQUIRE A SEPARATE TOPS PERMIT**

- Both the Hunter and landowner require a permit
- This is in addition to the Ordinance permit

**SPECIES NOT LISTED ON THIS PHAMPHLET DOES NOT IMPLY THAT PERMITS ARE NOT REQUIRED – INDIGENOUS BIRDS/SPECIALY PROTECTED BIRDS REQUIRE PERMITS PLEASE ENQUIRE WITH YOUR EZEMVELO DCO**

**PERMIT APPLICATIONS ARE OBTAINABLE FROM EZEMVELO – [Permits@kznwildlife.com](mailto:Permits@kznwildlife.com) LICENCES ARE AVAILABLE AT LOCAL GUN SHOPS**

**HUNTING AND PERMITS IN KZN. WHAT YOU NEED TO KNOW**

ALL PERMITS MUST BE SIGNED

OPEN SEASON 31 MAY TO 31 AUGUST

## Get Summer Fit!

**NOTTINGHAM ROAD**

**COMMUNITY - CONSERVATION - CONDITIONING**

---



**SOCIAL RUNNING CLUB**  
**THURSDAYS**  
**@ 06:30am**

Start in front of Miche Bakery, and run ~5km through the Bill Barnes Crane and Oribi Reserve, before heading back to Miche Bakery for an early morning coffee.

**How to join:**

1. Sign an Indemnity Form for the reserve. (NO INDEMNITY = NO RUN)
2. R20 cash donation for the reserve - UNLESS you are already a member in which case it is free.
3. Meet at **Miche Bakery at 6:15am** on Thursday mornings.
4. Join for a coffee afterwards if you have the time!

**ALL FITNESS LEVELS WELCOME**



THE CRANE FOUNDATION

# ECO TRAIL

**OPEN TO RUNNERS & WALKERS**


**EVERY SATURDAY**  
**7:30 - 11:00**


INDEMNITY FORMS TO BE SIGNED AT EARTH ROUTE MARKET. A STICKER WILL BE GIVEN AND CHECKED WITH THE GUARD AT THE GATE.

DONATIONS WELCOME VIA THE QR CODE WHEN SIGNING IN.




If you would like to join our membership or find out more about what we do at the KZNCF, follow the link: <https://kzncranefoundation.org.za/get-involved/become-a-memb...> or contact Sue on [admin@kzncranefoundation.org.za](mailto:admin@kzncranefoundation.org.za). Follow us on Facebook <https://www.facebook.com/kzncranef/> and Instagram [https://www.instagram.com/kzn\\_cf/](https://www.instagram.com/kzn_cf/) to see what happens during the month.



KwaZulu-Natal Crane Foundation (KZNCF) P.O. Box 35, Nottingham Road 3280 • 065 738 5818 NPO #002-553  
 • PBO 18/11/13459 • Vat Number 419 013 9115

Committee: James Berning (Chairman), John Pitout (Deputy), Jon Bates, Chris Brown, Antonia Mkhabela, Janet Snow, Rebecca Wakeford, Craig Elstob, Brent Coverdale, John Huson



**KZN Crane Foundation**  
 PO Box 35, Nottingham Road  
 South Africa



You received this email because you signed up on our website or made a purchase from us.

[Unsubscribe](#)

